

## SIMPLE WESTERN VALIDATED ANTIBODY DATASHEET

[View  
Antibody Link](#)

1

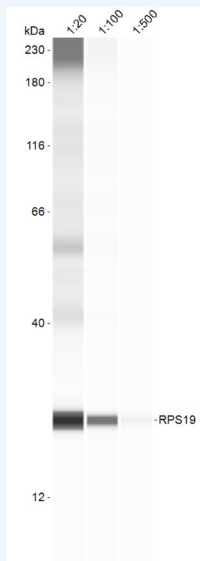


Figure 1: Simple Western Lane view shows human RPS19 antibody at 1:20, 1:100, 1:500 dilution in Hudep-2 cell line at 1.5ug/uL using 12 - 230 kDa separation system. Customer submitted data.

2A

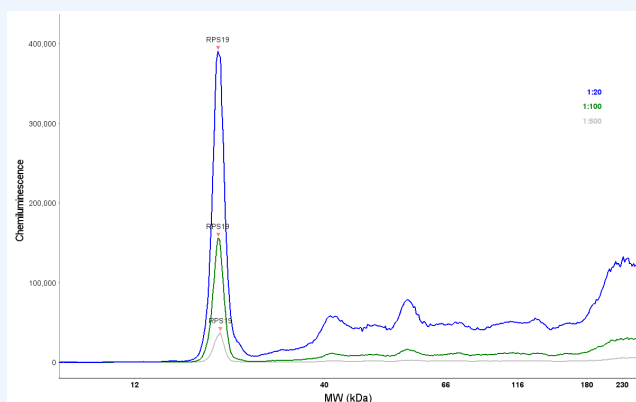


Figure 2A: Simple Western Electropherogram of human RPS19 antibody was used at 1:20, 1:100, 1:500 dilution in Hudep-2 cell line at 1.5ug/uL. Customer submitted data.

Figure 2B: Table range of antibody concentrations tested and peak areas and baseline values. Customer submitted data.

2B

ANTIBODY CONCENTRATION	PEAK AREAS	BASELINE VALUES
1. 1:20	4577326.40	484.60
2. 1:100	1613817.3	213.40
3. 1:500	353266.90	66.79

PROTEIN TARGET/ANTIBODY	
Protein Target	human RPS19
Protein Isoform	
Antibody Type	Primary
Host Species/Clonality	rabbit Polyclonal
ASSAY	
Sample Type	Hudep-2 cell line
Sample Concentration	1.5ug/uL
Antibody Concentration	1:100
Antibody Diluent	Antibody Diluent 2
Detection Mode	Chemiluminescent
Separation Type	Size
Matrix	12 - 230 kDa
Observed kDa	24

PUBLICATIONS

This antibody is a customer submitted validation for Gel-Free, Blot Free, Hands Free Simple Western Systems. To learn about Simple Western Systems, available Simple Western antibodies, or new antibody submissions visit the links below. For additional information, please contact [support@proteinsimple.com](mailto:support@proteinsimple.com).

[Simple Western Systems](#)

[Simple Western Antibody Database](#)

[Simple Western Antibody Submission](#)

PAGE 2/2

**biotechne**<sup>®</sup>

bio-techne.com

**Global** [info@bio-techne.com](mailto:info@bio-techne.com) [bio-techne.com/find-us/distributors](http://bio-techne.com/find-us/distributors) TEL +1 612 379 2956  
**North America** TEL 800 343 7475 **Europe | Middle East | Africa** TEL +44 (0)1235 529449  
**China** [info.cn@bio-techne.com](mailto:info.cn@bio-techne.com) TEL +86 (21) 52380373

Trademarks and registered trademarks are the property of their respective owners.